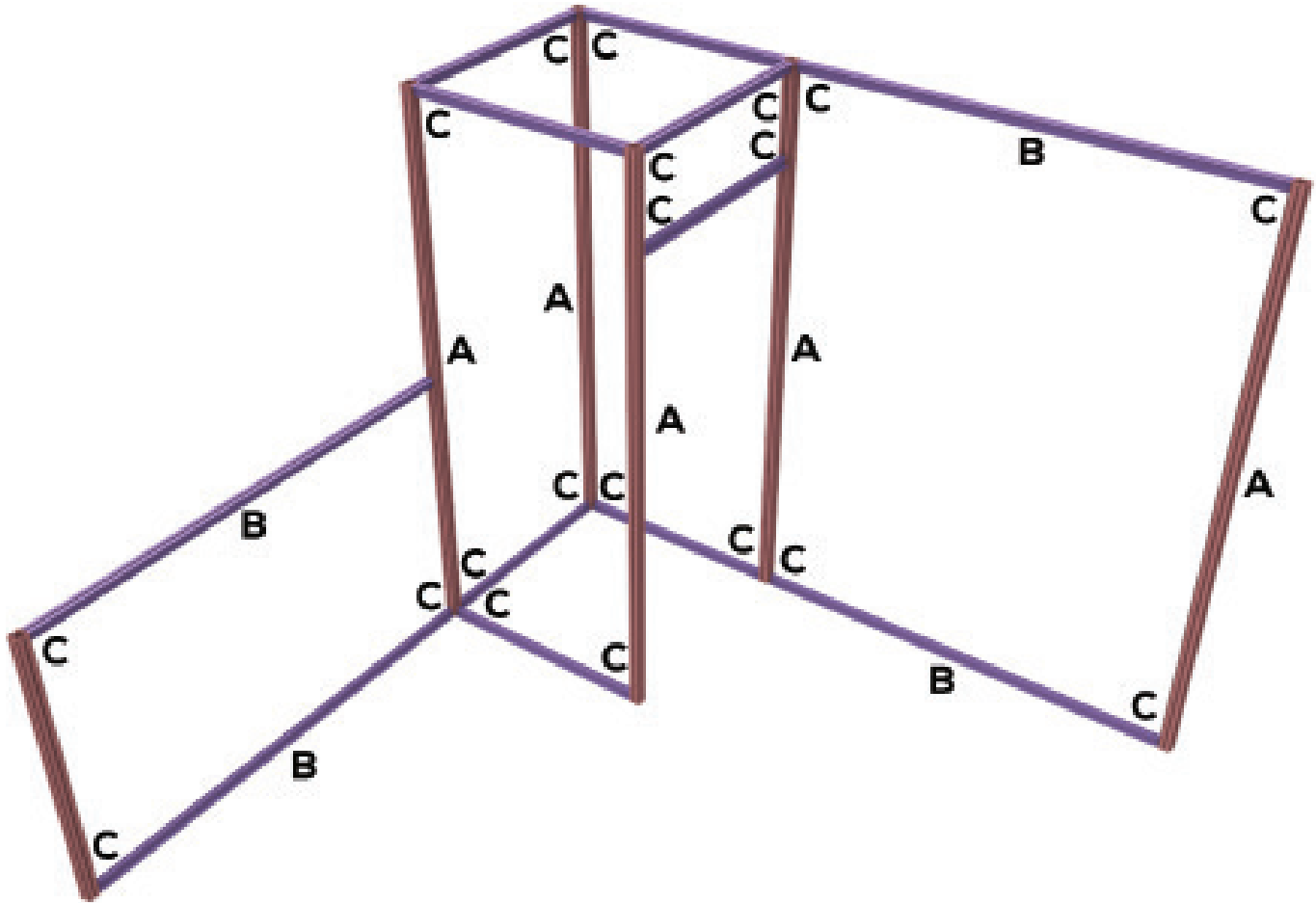
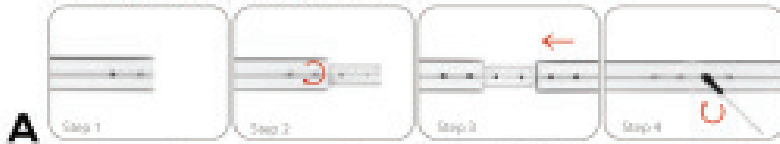


SET UP INSTRUCTIONS



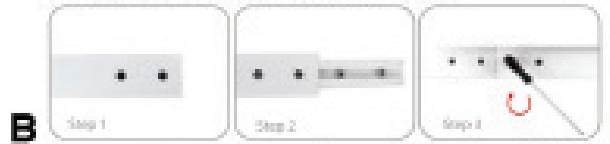
VERTICAL EXTRUSION ASSEMBLY



A

Insert connecting tube into extrusion and tighten the 2 locking screws. Slide other end of extrusion onto connector and tighten the 2 locking screws to secure.

HORIZONTAL EXTRUSION ASSEMBLY



B

Insert connector into extrusion and tighten the 2 locking screws. Slide other end of extrusion onto connector and tighten the 2 locking screws to secure.

CORNER CONNECTION



C

Line up lock on horizontal extrusion with one of the grooves on the vertical extrusion. Tighten screw to connect both pieces. Can attach extrusions and accessories to all 4 sides of the vertical extrusion.

The ends of each piece is numbered 1,2, 3, etc. Match up the numbers to construct frame (1:1, 2:2, 3:3, etc). Reference diagram above on where to start frame assembly.