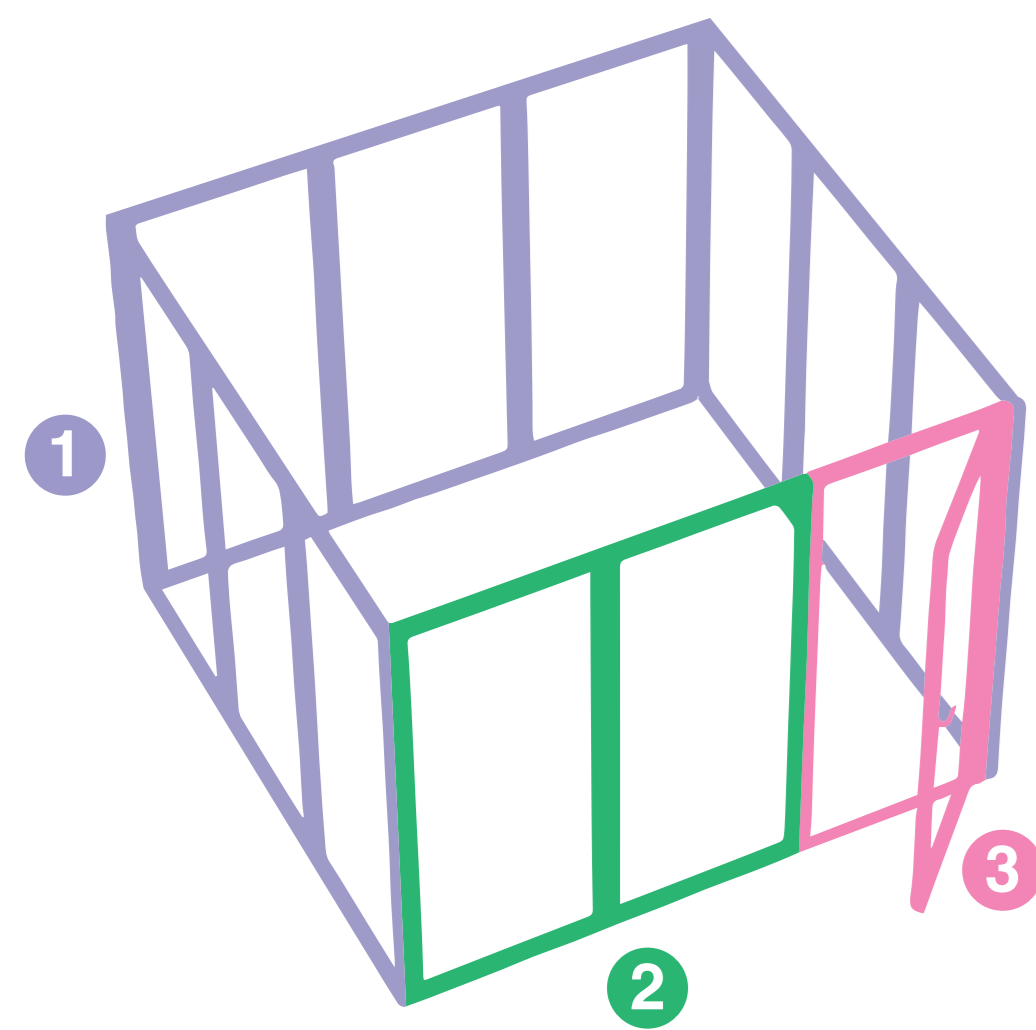


[TM10-MO-03] - 10x10 Modco Modular Trade Show Display 03 with Arch Bridge
 Artwork Template

● **Panel 1 x 6**
 Total Graphic Area: 117.125 inch W x 95.25 inch H (297cm x 242cm)

● **Panel 2 x 2**
 Total Graphic Area: 78.25 inch W x 95.25 inch H (199cm x 242cm)

● **Panel 3 x 2**
 Total Graphic Area: 34.25 inch W x 93.375 inch H (87cm x 237cm)



Bleeding area ———
 Safe Visual Line - - - - -

Notes to Designers:

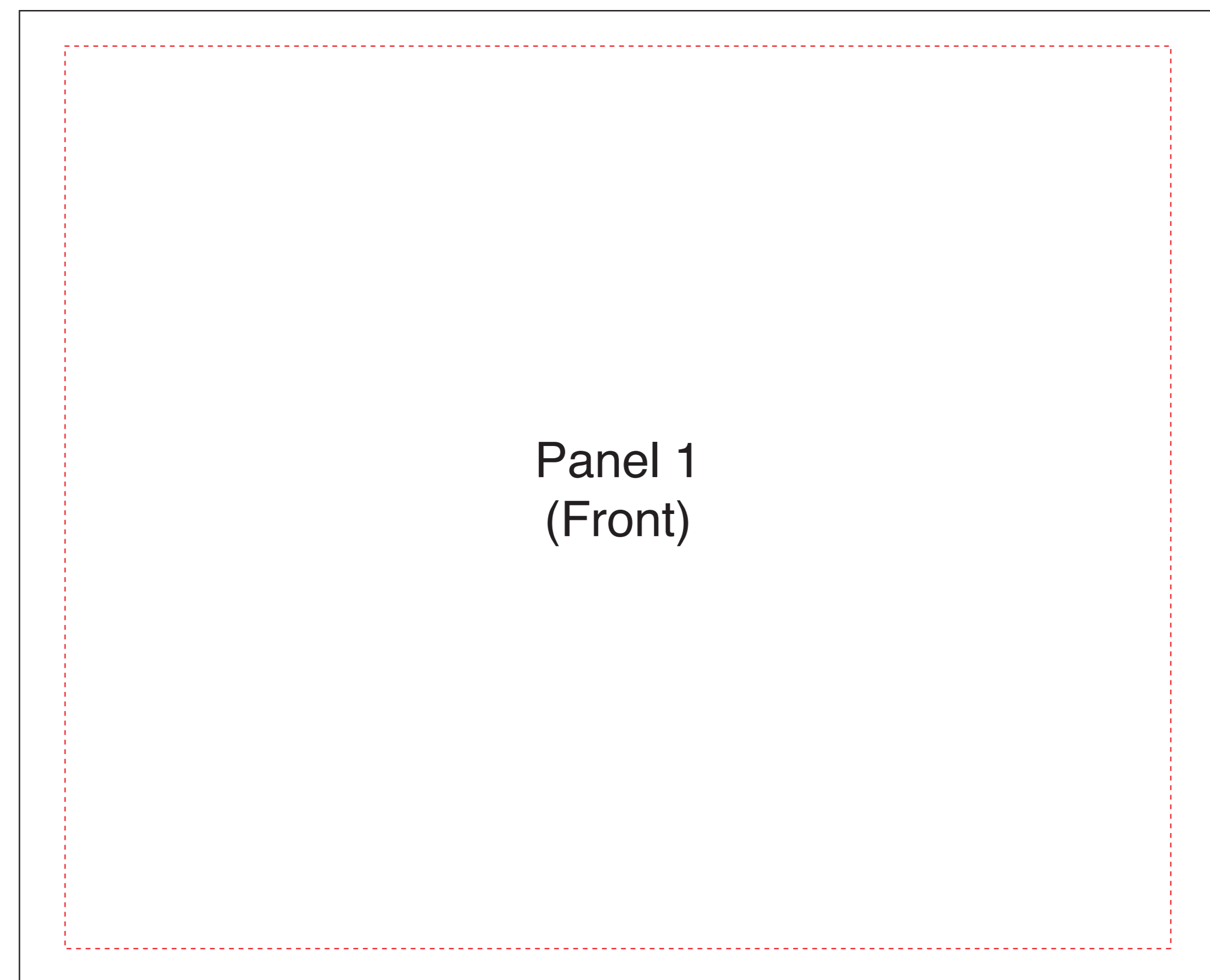
- All graphic files must be built at 100-120 dpi at the full graphic layout size.
- All graphic files must be created using CMYK mode to ensure the best color matching. If you would like a specific color matched, you MUST provide both PMS color and CMYK values or we cannot guarantee color matching.
- It is best to flatten all images and outline all text to ensure that nothing will be dropped out or changed during the file transfer.
- Graphics can be extended to the very edge but beware of the red visual line. Keep important images & text inside the red visual line. Images outside of the red visual line are subject to be trimmed off or covered by stitching.
- Remove the red visual line and help instructions upon submitting your artwork.

Preferred File Formats:

- .PDF (Vector Format or 100% Sized, Text Outlined)

Acceptable file formats:

- AI or EPS (Text Outlined, Images Embedded)
- PSD (100% Sized, 150dpi)
- JPG / JPEG (100% Sized, 240dpi)



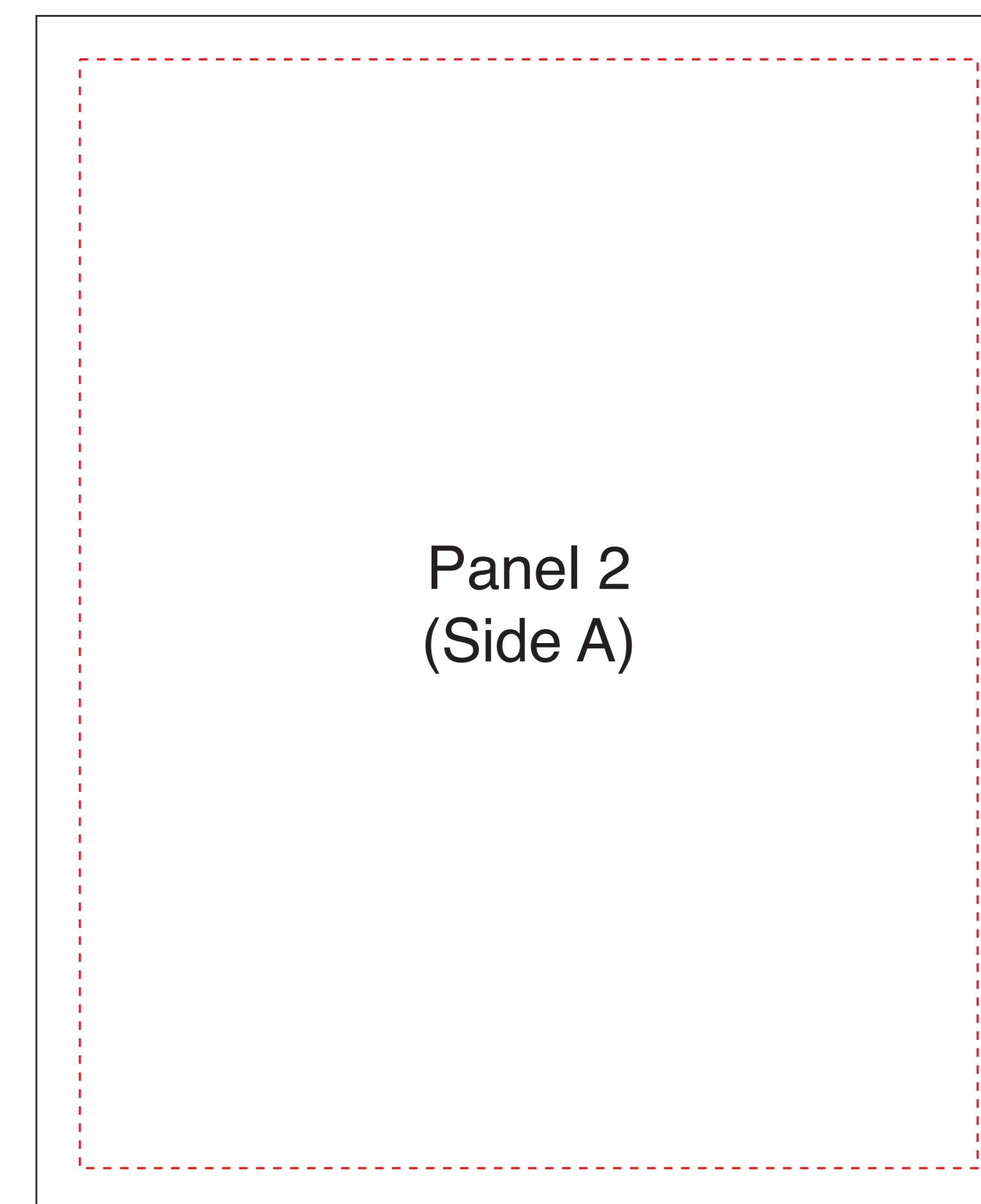
Panel 1
(Front)



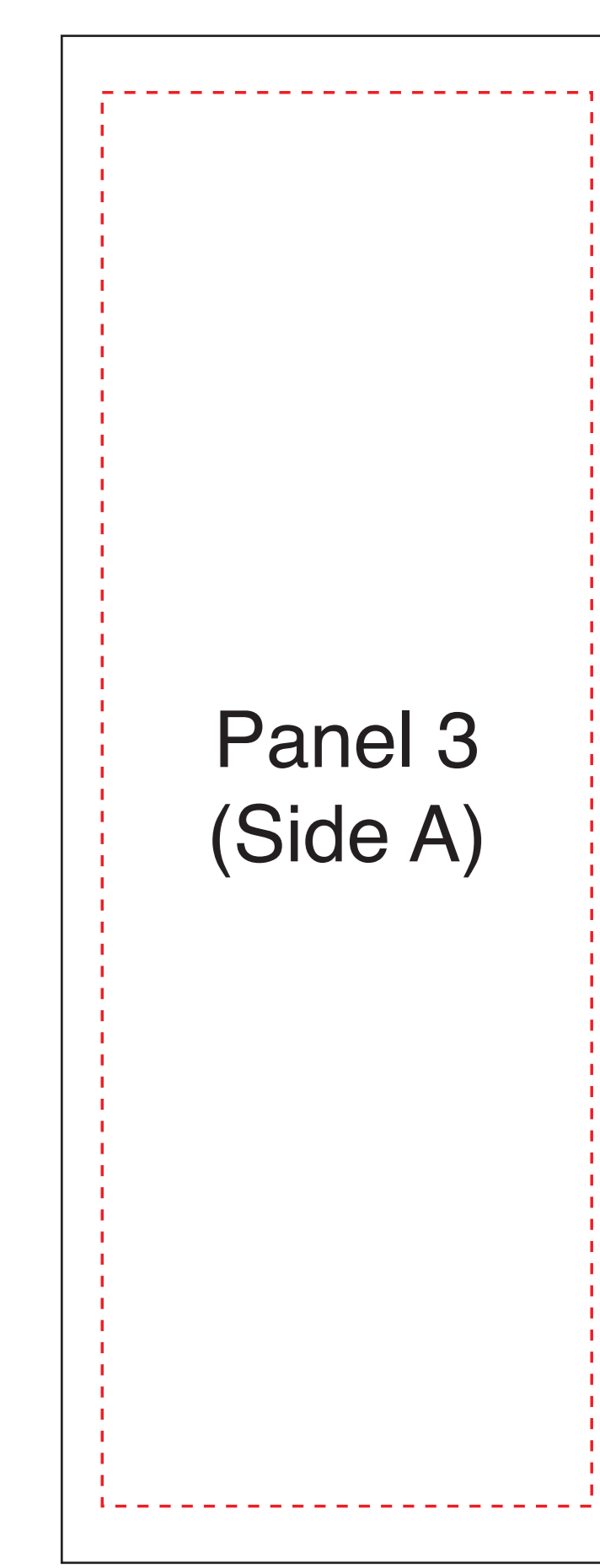
Panel 1
(Front)



Panel 1
(Front)



Panel 2
(Side A)



Panel 3
(Side A)



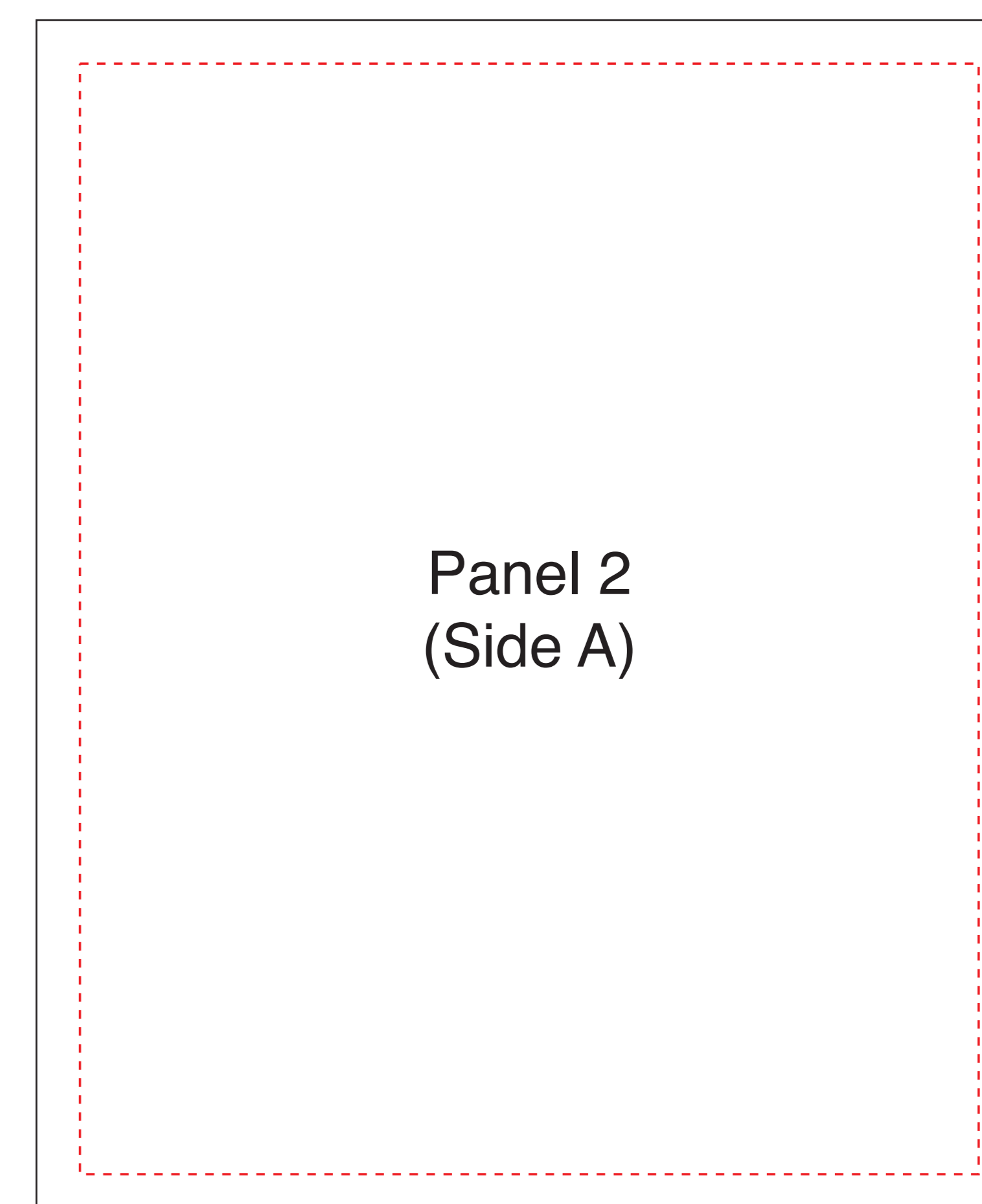
Panel 1
(Back)



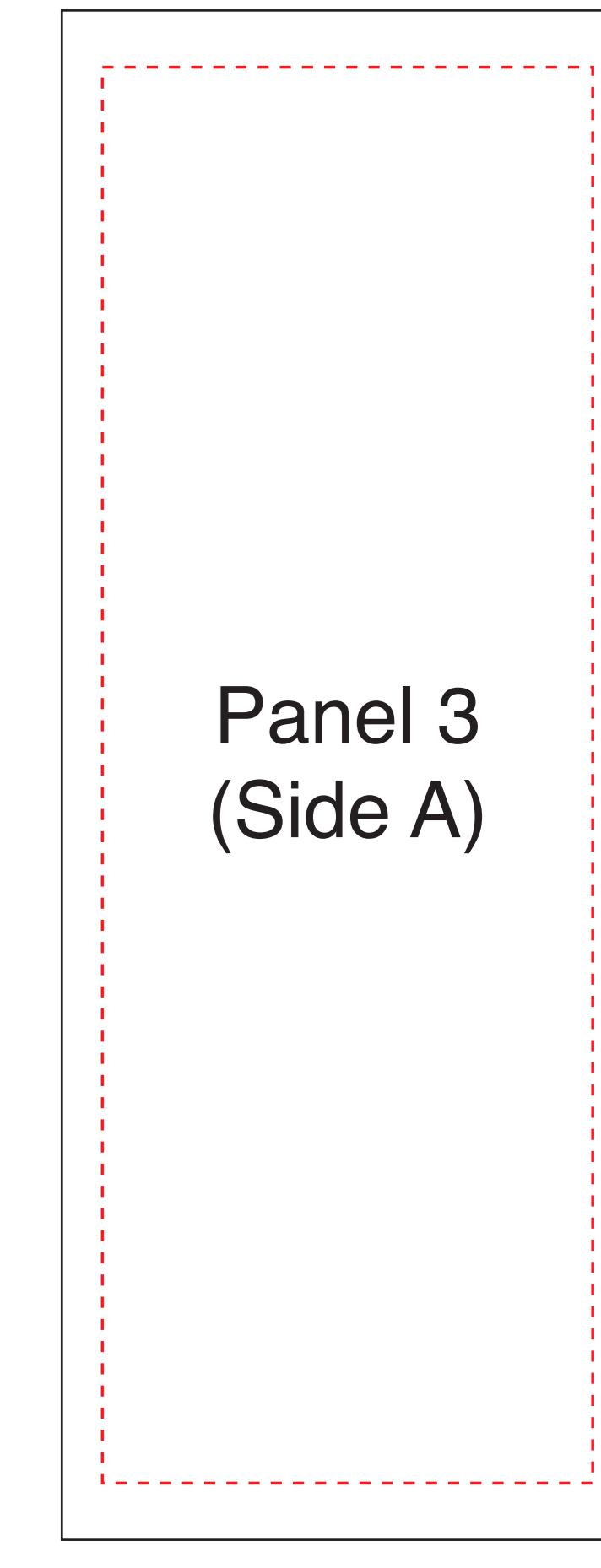
Panel 1
(Back)



Panel 1
(Back)



Panel 2
(Side A)



Panel 3
(Side A)